

OFFICIAL GAME GUIDE

**TALES
FROM THE
UNENDING
VOID**

CONTENTS

WALKTHROUGH	11
EPISODE 1	11
<i>CÉLINE</i>	11
<i>JADE</i>	11
<i>THIM</i>	12
<i>VESS</i>	12
EPISODE 2	12
<i>LILLY</i>	12
<i>THYIA</i>	12
<i>THIM</i>	13
<i>D'EE AND THE R'O</i>	13
<i>VESS</i>	13
<i>KIT</i>	13
<i>CÉLINE</i>	13
<i>NADYA</i>	14
<i>JADE</i>	14
EPISODE 3	14
<i>LILLY</i>	14
<i>VESS & THIM</i>	15
<i>SIMULATION</i>	15

Copyright © 2020 – 2023 Perverteer Games
This guide has been carefully assembled, if you spot an error or have any remarks, please contact me at perverteergames@gmail.com

Tales From The Unending Void is a work of fiction. Names, characters, places and incidents either are products of the author's imagination or are used fictitiously. Any resemblance to actual events or locales or persons, living or dead, is entirely coincidental. Tales From The Unending Void is an adult game containing graphic depictions of sexual acts. All characters in this game are over the legal age of 18.

JADE	15
AVEN	15
THYIA	15
VESS	16
CÉLINE	16
EPISODE 4	16
NADYA	16
ZIV	16
LUZANE	17
HANNAH	17
AVEN	17
RAENE & ZIV	17
RAENE	17
JADE	18
THYIA & LILLY	18
EPISODE 5	18
TRELLKA	18
LILLY	18
CÉLINE	19
VESS	19
WORKSHOP	20
SERVING GIRL (EXTRA SCENE)	20
THIM	20
RAENE	20
FACTORY	20
JADE	21
CARGO BAY	21
EPISODE 6	21
SIMULATION	21
LILLY	22

AVEN	22
DR. MOORA	23
RAENE	24
EPISODE 7	25
AVEN	25
LILLY	25
NADYA	25
VESS	26
JADE	26
THYIA	26
SEARCHING CETRUVAR'S QUARTERS	26
EPISODE 8	27
SIMULATION	27
RAHIA (ACARHYN COMMANDER)	27
NADYA	28
JADE	28
KIT	28
ZIV	28
RAENE	29
EPISODE 9	29
VESS	29
NADYA	29
CAESE	29
ZIV	29
THIM	30
JADE	30
ERYLIN	30
EPISODE 10	30
NADYA	30

RAHIA	30
ERYLIN	31
CÉLINE	31
RAENE.	31
ALLIANCE	31
THE HUNT.	32
EPISODE 11	32
VESS	32
ORGY	32
THYIA	32
EPISODE 12	33
VESS	33
AVEN	33
EVA	33
THYIA	33
YVE	33
NADYA	34
JADE.	34
KVI	34
EPISODE 13	34
CÉLINE	34
LILLY	34
VESS	35
EVA	35
EPISODE 14	35
AVEN	35
JADE.	36
LILLY & CÉLINE.	36
NADYA	36

ZIV	37
TAND	37
EPISODE 15	37
RHEDIA	37
SIMULATION	37
EVA	38
JADE.	38
LILLY	39
THYIA	39
EPISODE 16	39
SCOLGUIN PRISONER	39
SCOLGUIN QUEEN	39
THYIA	39
EPISODE 17	40
DOCKS ENCOUNTER	40
TAAGMAR DIGNITARY	40
GLIXKEN MERCENARY	40
EVA	40
LILLY	40
CÉLINE	40
RAENE.	41
EPISODE 18	41
GLIXKEN	41
EVA	41
LILLY & CÉLINE.	41
ZIV	42
THYIA	42
CHARACTERS.	45

CAMRAN	46
LILLY	46
EVA	47
AVEN	47
NADYA	48
JADE.	48
KIT.	49
CÉLINE	49
VESS	50
THYIA	50
ZIV	51
RAENE.	51
THIM	52
CALISTA.	52
AGUST	53
YVE	53
RAHIA.	54
KVI	54
D'EE.	55
HANNAH	55
GLIXKEN	56
KARAN HREIR	56
LUZANE	57
THE CONFESSOR	57
IANA AND SILL	58
DAORN	58
VITRIV.	58
TAERA.	58
DR. MOORA.	58
RANIMO CETRUVAR	58
ERYLIN	59
ATHRYN.	59
FRISA	59

CAESE.	59
NISE.	60
ARIAH.	60
KEODELE	60
MADRS.	60
TINESIA	60
SIORA.	60
ARLYA.	60
RHEDIA	61
XATRAPE	61

PLACES, TECHNOLOGY & ORGANIZATIONS 63

TUOLOVI	64
VLCO.	64
TERRAN GALACTIC NAVY	64
TERRAN GALACTIC SOVEREIGNTY.	64
THE SYLAS-KARZEN DRIVE	65
VULPES VELOX	65
TGN YPOTRYLL	66
TGN ENFIELD	66
IRON BASTARD.	66
NYIRUAN 12-BETA	67
RYŪJIN PRIME	67
VERDANT STATION	67
VERDIGRIS V	68
HIS ETERNAL HOLY LIGHT THAT GRACES OUR PALTRY EXISTENCE A THOUSANDFOLD	68
CONVITÆ	68
BARRANTHIS.	68
HÖFEL MDCL	69
ALMAGEST	69
ERIGONE	69
KEPLER XIV	69

THEATER OF SENSES (KEPLER)	70
TGN JACULUS.	70
DOUVIS.	70
SPECIES	73
HUMANS	74
TWI'LL.	74
R'O	74
BOVERINE.	74
RHENKOY	75
TUBLOSHI.	75
ACARHYN.	75
YALVAI	75
EETU.	76
CALGOUND	76
UNDREA.	76
TYUARENE	76
SCOLGUIN	76
VRARR	77
TAAGMAR.	77
C'TAET.	77

WALKTHROUGH

This walkthrough will list the various conversation choices and story decisions you can make in the game and the consequences they have.

EPISODE 1

CÉLINE

Céline is the first romanceable character and you can do so by saying "I did it for you" during the first conversation with her. There's a chance to opt out later as well.

During the night you can go to her which will be the start of your relationship. You can also turn it into a one-night stand by answering "Better not" to her question.

JADE

Getting a massage from Jade leads to a handjob scene, just say "Yes" if you want her to go further. Afterwards, you can be harsh on her by scolding her, this will influence your relationship with Jade later on if it becomes a pat-

tern. Rejecting her doesn't have a negative effect.

THIM

Thim is very hostile to you, but you can change his behavior throughout the course of the story. Not ignoring him in the medbay is the first step towards that.

VESS

If you don't tell Vess about your plan, she'll join the crew as a stowaway. It also makes it harder to pursue her as a love interest.

EPISODE 2

LILLY

To stay on Lilly's good side, you should comfort her and be understanding. Talking to her later, she'll like it if you don't press further and leave when she asks you to.

THYIA

You can have sex with Thyia right away if you propose to talk some more with her in private and propose sex to her.

Delivering the cargo later and going to the university has a negative influence on your potential relationship with Thyia and also impacts Lilly's.

Not accepting Thyia into the crew right away has a negative effect on your

relationship with Thyia and Lilly. You can apologize to Thyia about this later, partly negating the effect. Getting angry with her about it further sours your relationship.

THIM

Thim will hate you more if you let him enter the Pit of Despair instead of going yourself and he will not want to talk to you later. You only have the choice to let him go instead of yourself if you didn't lie to the R'o asking about whether there are any females with you.

If Thim didn't go to the Pit of Despair and if you talked to him in the previous episode, Thim will open up a little if you say you weren't worried.

D'EE AND THE R'O

You can choose to help the R'o or not, potentially opening up a branch later on in the story. You can have sex with all the women either way and declining doesn't have a negative effect.

VESS

If you want to earn Vess' trust and allow her to open up to you in the future, you should reassure her.

KIT

If you let Thim enter the Pit of Despair, Kit will question your leadership capabilities. Dismissing his concerns might have a negative impact later on.

CÉLINE

Telling Céline you love her strengthens your relationship further. Staying

silent doesn't have any consequences, yet.

NADYA

Dismissing Nadya's remark about reliving happy memories has a very negative impact on your relationship with her.

JADE

You can empathize with Jade by saying sorry. Answers like these will determine what kind of relationship you two will have (romantic or submissive).

EPISODE 3

Flying through the asteroid field can be done with minimal damage, which will lead to a slightly different path for the remainder of the next episode. Both outcomes have no negative impact on the game.

The sequence for minimal damage is:

- Shoot
- Full thrust
- Evade

LILLY

Reassure Lilly when she talks with you about Eva and don't dismiss her wanting to participate in the Sagualith mission.

Don't admonish Lilly after the Sagualith mission if you want to stay on her good side.

VESS & THIM

Depending on your interactions with Thim you can have a normal conversation with him. Insulting him makes him more negative towards you.

SIMULATION

The simulation has several possible outcomes:

- **Sex with Berit and Leda (soft)**
Talk to the woman and offer to pay her taxes or come to a deal.
- **Sex with Berit and Leda (hard)**
Force entry, fuck them
- **Sex with Berit**
Force entry, fuck Berit
- **Sex with Leda**
Talk to the woman and threaten her, propose to fuck her or force entry and fuck her

All the other choices lead to a premature end of the simulation.

JADE

Being curt to Jade might the way change she views your relationship.

AVEN

Don't deride Lilly in front of Aven, she won't like it.

THYIA

Thyia doesn't respond well to bluntness, so propose a break, but be coy to her.

VESS

To develop your relationship with Vess, be understanding and hug her.

CÉLINE

Allowing Céline to send a message might have negative consequences for the crew later on.

Refusing to bring the shuttle aboard will negatively impact your relationship with Céline.

EPISODE 4

NADYA

Hugging Nadya will increase her trust in you.

If you haven't dismissed her remark about reliving memories in episode 2, a plan to go to Kepler for a holiday will come up in conversation. Otherwise you'll have the conversation with either Aven or Kit.

ZIV

Bargaining with Ziv leads to a slightly altered chain of events.

Being derisive will cut the conversation on the way to Skarak short and counts negatively towards your relationship with Ziv.

Don't press Ziv about Raene as it will only annoy her.

Be polite when asking about her genitals. If you didn't have sex with Luzane, you can tell Ziv whether her dual sexuality bothers you or not. If you

tell her it bothers you, it will close off the romance option for her for the remainder of the game. The same goes for the option where you outright ask her if she has a cock.

LUZANE

If you tell the truth to Luzane, you'll be able to talk to Ziv about her relationship with Luzane later on.

You can cut the sex with Luzane (a futanari character) short by pretending to go along with her. The two other options lead to sex with her.

HANNAH

Being polite to the Tubloshi and accepting their wish to examine the body will cause Hannah to ask you to have a drink with her in private and ultimately have sex with you.

AVEN

Telling Aven not to flash her cleavage will have a negative impact on your relationship.

RAENE & ZIV

Confronting Raene and Ziv doesn't have negative consequences, but getting angry at them does.

RAENE

Saying something nice to Raene makes her trust you more. Getting angry at her does the opposite.

If you confronted Raene and Ziv you shouldn't doubt Raene's word.

JADE

There are two versions of Jade's sex scene. You can dominate her by putting her in her place, or just laugh with her, after which you'll have the option to have sex, just lie with her or reject her. Rejection has a negative impact on your relationship with her.

Dominating Jade influences your relationship with her. If you apologize after having sex with her you can possibly still have a loving relationship with her in the future, depending on how you've acted towards her so far. Not apologizing further cements her submissiveness towards you.

THYIA & LILLY

Having a drink with Thyia and Lilly will give you the opportunity to hear more about Thyia's childhood and build a relationship with both girls.

EPISODE 5

TRELLKA

Thyia will be positively surprised if you help Vitriv, trying to strike a deal does the opposite.

LILLY

For the most positive outcome of your conversation with Lilly you should be understanding and apologize.

CÉLINE

Being strict with Céline might have negative consequences later on.

If you do not have a romantic relationship with Céline yet, now you have the next opportunity to start one. Dependant on events from Episode 3 (allowing her to send a message to her mother or not refusing to haul in the shuttle) or in Episode 2 (comforting Lilly or going into the Pits of Despair yourself) she'll be open to a dinner date.

Players on the romance path will automatically be able to take her out on a dinner date.

During the date you can either keep the relationship a secret or not. If you don't come out as a couple publicly you might have more trouble later romancing the other love interests.

If you're not in a relationship, you can either just talk or ask about the relationship. Depending on how Céline perceives you, you have the opportunity to start a relationship with her. She will only agree if you allowed her to send a message to her mother in Episode 3 or if you've comforted Lilly, went to the Pits of Despair yourself (both Episode 2) and didn't refuse to haul in the shuttle (Episode 3) earlier.

Allowing Céline to continue with her feet opens up possible foot-fetish related scenes in the future.

VESS

Kissing Vess will open up the romance path with her, though she might reject you if you haven't been nice and forthcoming with her in the previous episodes (told her the truth in Episode 1, reassured her in Episode 2 and comforted her in Episode 3).

WORKSHOP

Going in alone into the workshop will allow you to have sex with the mechanic inside, if Thyia goes in alone she'll have a lesbian encounter with the same mechanic, going together doesn't lead to a sexual outcome.

SERVING GIRL (EXTRA SCENE)

This scene contains optional watersports content. If you choose to keep looking you might see watersports content in the future as well. Averting your eyes makes sure the watersports doesn't happen now and in future.

THIM

You have the option to recruit Thim as the ship's doctor in this conversation. Failing to do so will open up a different path for Thim's story. You can either force him to become a doctor, or ask nicely. Forcing him doesn't help your relationship.

RAENE

If you've acted brusquely towards Raene in the past she might not open up to you. Persuading her to open up is the best option, as intimidating will shut her down completely.

Being accepting also counts positively towards your approach to Raene.

FACTORY

Agreeing to sabotage the factory will make Thyia and Jade like you more, otherwise they'll go behind your back and disrupt the factory's operations anyway.

Shooting Garomph outright will make Jade fear you (more), indulging or

threatening him will not have any effect on Thyia or Jade.

Helping the women will be regarded as a positive action by both Thyia and Jade. It also opens up a sex scene with a couple of the women later on.

JADE

Jade will comment on you or Thyia shooting Garomph later on. Brushing it off will have negative consequences for your relationship with Jade, putting her in her place will make her submissive, while reasoning with her ensures a relationship on equal footing.

CARGO BAY

If you go alone to the cargo bay, you'll have the option to have sex with three of the women. Sending away the pregnant girl will possibly close off any further pregnancy content.

Whether you accept the women's payment or expect nothing, you have the opportunity to have sex with them in both cases.

EPISODE 6

SIMULATION

The simulation scenes won't play out if you choose to ignore it. If you ignore it twice, the last simulation will not play out.

LILLY

Peeking at Lilly doesn't have a negative effect, though she might mention it later. Offering her the bed counts as a positive choice.

If you want a future romantic relationship with Lilly there are a couple of choices to make in this episode. Pushing Lilly away will make it harder to have a romantic moment later on. Proposing that you're in love heightens the chances of romance later on. Comforting her will allow you to kiss Lilly, which will put you firmly on the romantic path with her, despite what happens later in the episode. You can also choose to keep holding her, but in that case you'll have a harder time getting into a relationship with Lilly in a future episode, the same goes for letting her sleep.

AVEN

Telling Aven you're in love with Lilly has no negative consequences, but might come into play in later episodes. The best thing is to tell her the truth about your feelings for Lilly.

This episode lays some of the groundwork for a relationship with Aven. You should tell her the truth and ask about her feelings. You can then acknowledge you feel the same way, opening up the romance in future episodes. Lying, not talking about it or ignoring her feelings will make it harder to pursue a relationship with Aven later on in upcoming installments of the game.

Back on the Iron Bastard, don't pressure Aven into talking about what happens on the research station. So say you understand and wait for her to come to you in a future episode.

DR. MOORA

You can have sex with the doctor if you answer her questions to her satisfaction. Every option gives out a certain number of points and you need more than 4 to succeed, as well as telling the doctor you're attracted to her. It's best to lie to her at certain points when the option is offered, because being truthful will give the company she's representing too much useful data.

Do you enjoy sex?

- Evade +1
- Truth +1
- Lie

Have you ever had sexual urges that defied the social norms of your society?

- Yes +1
- No

Do you masturbate often?

- Yes +1
- No

Are you sexually attracted to the redheaded girl you share a cell with?

- Yes +1
- No
- No (Lie)

Are you sexually attracted to the brunette girl known as Aven?

- Yes +1
- No
- No (Lie)

Are you sexually attracted to the older woman Nadya?

- Yes +1

- No
- No (Lie)

Are you sexually attracted to me?

- Yes +1 (Choose this option if you want to have sex with Dr. Moora)
- No

Have the past few days heightened or lowered your sexual desires?

- Heightened +1
- Lowered
- No change

If your score is high enough and expressed your attraction she'll ask you how you'd fuck her, if you indulge her the scenes should play out from there.

RAENE

To further cement your friendship with Raene and open up a possible romantic path, you should comfort her and be understanding. Ignoring or berating her will have negative consequences for your friendship.

Back on the ship, you should placate with Raene and if you've been nice enough to her, she'll reveal her secret. If you're accepting, you can talk about her past and dig into her relationship with Ziv some more. Comforting her about the events on the research station is the best option. Demanding things of her, or being dismissive has a negative effect on your relationship.

GUARDS

You'll deal with two situations involving guards. The first one you can intimidate or bluff at your leisure.

The second situation you should open the door and confront the guards. The other option will lead to shooting them, which has negative consequences for your relationship with Jade.

EPISODE 7

AVEN

Professing your love will put you on a romantic path with Aven. If you've pushed Aven into talking in Episode 6 or were dismissive about Lilly in Episode 3 and Aven in Episode 4 you'll need to apologize.

Later, on the Iron Bastard, Aven will come to your quarters. Answer her question about having second thoughts with "No", otherwise she'll storm out and you won't be able to rekindle the relationship.

LILLY

If you want to remain on friendly terms with Lilly and want her to talk about the kiss you might have shared, you should reassure her. Be understanding and give her space to allow for the conversation and a potential romantic relationship to continue in a future episode. All the other choices will have a negative impact.

NADYA

If you've kissed either Aven or Lilly, don't lie to Nadya if you want any chance of having a romantic relationship with her later on. If you haven't made any moves on Lilly or Aven, and want a romantic relationship with Nadya be sure to embrace her.

VESS

There is an opportunity to spend the night with Vess and furthering a potential relationship with her. Press the issue and offer her a drink, after you talk, welcome her and accept to spend the night. During the night you'll get the choice to touch her breasts, triggering a sex scene. Pushing her away will make it less easy to get into a romantic relationship with Vess later on.

JADE

Complimenting Jade on her exercises counts positive towards an equal relationship. Being rude reinforces her submissiveness.

THYIA

If you want to pursue a relationship with Thyia, you should kiss her again.

Meeting Thyia again in a corridor of the Iron Bastard you can follow her to the engine room. To have sex with her and a chance at having a romantic relationship, you should persuade her to talk and tell her about your feelings.

SEARCHING CETRUVAR'S QUARTERS

You should not take too long searching for clues in Cetrivar's apartment. Taking too long will result in Jade getting wounded during your escape. Looking near the desk will take you straight to what you're looking for.

EPISODE 8

SIMULATION

Not tampering with Lilly's profile will lock you out of the simulation.

Not apologizing to Eva and denying your love for Lilly might have negative consequences for how the simulation develops further. Kissing Lilly back might also change the dynamic between Eva and Lilly in the simulation.

Pursuing Eva, entering her room and telling her you love her ensures you'll be able to continue the simulation, despite the way the scene ends.

Clearing the simulation ends all simulation scenes with Eva and Lilly in the game. Abandoning the simulation might have negative consequences later on in the game.

RAHIA (ACARHYN COMMANDER)

The events on Erigone involve two factions (warrior and priest caste). Rahia is the main representative of the warrior cast and can become an ally. Yelling at her during her introduction in the cells makes that achieving alliance harder.

You can choose to go with Rahia to her chambers or decline. Declining rudely will lower your chances at an alliance with the warrior caste in future episodes. Politely declining doesn't have any negative consequences, though you miss out on important information about Citadel politics and the opportunity to have sex with Rahia.

Declining to have sex with Rahia doesn't have any negative consequences, but you miss out on missing Athryn, the warrior who wounded Kit on Lanan P-10. If you do have sex with Rahia you have the option to punish Ath-

ryn, this will earn you the respect of Rahia and by extent the warrior caste.

NADYA

Rebuking Nadya has a negative effect on your relationship with her.

JADE

If Jade was injured during the shootout on Almagest you can express your concern to strengthen your friendship with her.

When you visit the baths with Jade, or encounter her after having been there with Raene, you can opt to stay there and have sex with Jade.

KIT

If you visited Rahia and had sex with her and two other girls before meeting Kit you can tell him about the girl who stabbed him on Lanan P-10. Telling him will strengthen your bond, not informing him might have negative consequences later on.

ZIV

The conversation with Ziv unfolds in different ways depending on how you've treated Raene so far. If you've treated her badly you have the option to express your dislike of both Ziv and Raene which closes off any romantic relationship with either of them. Denying you have a problem with them gives you the opportunity to a more nuanced conversation. "Remain neutral" and "Don't like it" have the same outcome, those choices close off any romantic opportunities. "Don't mind" gives you the option to romance either Ziv or Raene later on. Telling Ziv you don't like Raene will close off the romantic path for Raene, but you might be able to romance Ziv later on.

Depending on your choices, you have the option to tell Ziv you like her. This will put you on the beginning of a romantic path with her.

RAENE

To pursue a romantic relationship with Raene, invite her to the baths in the Citadel, this is only possible if you've been nice to her.

EPISODE 9

VESS

If you want to have a romantic relationship with Vess later on, you should kiss her. Ending things will close any path to a relationship with her.

NADYA

Declining to wash Nadya will make it harder to get into a relationship with her later on.

CAESE

Caese will remember you getting angry at her, which might shut you out of any future sexual encounters with her.

You should answer Caese if you want to have sex with her. This doesn't have any negative consequences for your potential relationship with Nadya.

ZIV

If you want to pursue a relationship with Ziv, you should investigate the token left in your quarters, go to the grove and undress. If you choose to

accept being her mate you'll officially be in a relationship with her.

THIM

Ridiculing Thim will have a negative effect on your friendship.

JADE

Declining sex with Jade will make it easier for you to patch things up with Céline in the next episode. However, if you didn't have sex with Jade in Episode 2 and 4 you won't be able to romance Jade.

ERYLIN

Allying with Erylin (instead of Rahia, or remaining neutral) is only possible when you either consider her offer or accept it right away.

EPISODE 10

NADYA

You should challenge Nadya and convince her to pursue a relationship with her. Any other choice will rule out a relationship.

RAHIA

The choices Rahia offers you are straightforward, you can either accept, decline or think about the alliance. Thinking about it will give you the opportunity to make a choice later.

If you agree to ally yourself with Rahia, consider Erylin's offer and ultimate-

ly choose to ally yourself to the priest caste or go solo, your choice could have a negative impact on your standing with Rahia and the warrior caste.

ERYLIN

Tearing up the invitation will immediately close off the possibility of an alliance with the priest caste.

If you want to have sex with Erylin and her acolyte, but don't want to enter in an alliance with her, you need to make the following choices: "Looking at options", "Maybe". Any other choices will lead you to accept (you'll still have the threesome) or decline (no threesome) the alliance she offers you.

CÉLINE

If you want to pursue multiple relationships or Céline to join the eventual harem, you shouldn't lie to her. Saying you love her will further cement your relationship. If you promise monogamy, you'll be able to end all other current relationships, or continue them (with negative consequences later on).

If you want to have anal sex with Céline later on, you should try to penetrate her at this point.

RAENE

To enter into a relationship with Raene, you should kiss her when you have the opportunity.

ALLIANCE

If you haven't already made your choice, you now get to choose between remaining neutral or throwing in your lot with the warrior or priest caste.

The choice might have an impact later on in the story, but not negative influence on the Hunt.

THE HUNT

Investigating the scream will lead to a scene where one of the Acarhyn warriors is entangled. If you rescue her or walk away, you won't be able to see the sex scene. Rescuing her will make Rahia look favorable upon you, even after the sex scene.

EPISODE 11

VESS

Getting angry, forcing a confession out of Vess and rejecting her will have an impact on your relationship with her. If you're negative towards her in all of your responses it will eventually end the relationship/romance you have with her.

ORGY

Taking the performance-enhancing drugs the Acarhyn offer you has no negative effect.

THYIA

In order to have a real conversation with Thyia, you should press the issue and deal with it. If you don't you will not be able to romance her.

EPISODE 12

VESS

By giving Vess a chance and leaving an opening for her being able to prove herself you'll be able to continue a romantic relationship with her.

AVEN

If you cast doubt on the future of your romance with Aven it might have negative consequences later on.

EVA

Teasing Eva will count towards a possible romance with her.

THYIA

If you're in a relationship with one or more of the other girls, you should tell Thyia about it. She doesn't handle breaches of trust very well.

YVE

Going solo into Yve's chambers or not doesn't have any negative effect. All three subsequent options will allow you to advance the story, but revealing yourself to Yve is by far the worst one.

If you decline Yve's visit to the bathroom, you'll unlock a watersports scene with her and possible future watersports content.

NADYA

Embracing Nadya has a positive impact on the chances of a relationship with her.

Remaining neutral or getting angry at Nadya because of her revelations will negatively impact your chances on a romance with her.

JADE

It's not necessary to offer Jade to the Tyuarene. If you don't, she'll reward you with a blowjob during the trip to the Theater of Senses.

KVI

It's up to you how you behave around Kvi, but having sex with her might open up future possibilities with her.

EPISODE 13

CÉLINE

There's the option to have sex with Céline, but depending on how you handle the conversation with Lilly, this option could be closed off after talking to Lilly.

LILLY

If you're in a relationship with both Lilly and Céline, Lilly will confront you about this. Telling her the truth is the only way to not be forced to break up with Céline. After telling Lilly about Céline she will give you the option to breakup with Céline, continue the relationship with the both of them or

telling her that you have relationships with even more women (if applicable). Being honest with her will have a positive impact on your relationship with Lilly in the future (open up the harem path), despite her initial reaction. So if you have other women on the side, you should tell her everything at this point.

VESS

If you've been hostile towards Vess, you have the option to make her your servant. This will eventually free her from captivity and make her serve you. This will also lead to a sex scene.

Alternatively you can tell Vess you love her and promise to free her from the brig, which will boost your romantic relationship with Vess.

EVA

Entering the simulation with Eva will help you progress the relationship with her. Watching the orcs and hunter have sex doesn't have any (positive) influence, but kissing Eva at the end of the simulation does.

EPISODE 14

AVEN

Aven will bring up the topic of pregnancy. Choosing "Go for it" and giving her a creampie in a future episode will open up her pregnancy path. The "Maybe" option allows possibly mentioning a pregnancy in the future, but there will be no sexual content related to pregnancy with Aven in the game. "No pregnancy" will shut down any pregnancy content with Aven.

JADE

If you're in a relationship with Jade and have made Vess your servant, she will end things. Threatening her doesn't have an impact on her choice, but it might make her more hostile in the future.

LILLY & CÉLINE

Making Lilly apologize might make it harder for her to accept the situation in a later episode, depending on other choices you've made in the past regarding her.

If both Céline and Lilly stay in the room, you can either propose a harem or dismiss the thought. If you dismiss the thought, you'll continue to have separate relationships with both the girls. The harem option will allow you to eventually start a harem with Céline, Lilly and ultimately the rest of the girls you've romanced.

Trying to share the blame for your actions will make it impossible to suggest a harem if either Lilly or Céline has broken up with you during the confrontation between the two girls.

If Céline or Lilly has walked out of the conversation, you have three options with the remaining girl:

"Break up with everyone else" (this will end any current relationships and prevent future relationships), "Make it work" (pursue individual relationships with everyone), "Propose a harem" (if you took responsibility).

NADYA

In order to have sex with Nadya, you shouldn't continue and take advantage of her drunkenness. Nadya will return later and you'll be able to have sex with her.

ZIV

The post-coital conversation with Ziv has two outcomes. You can either choose to receive anal from Ziv in the future ("Agree to anal sex"), where you switch between topping and bottoming Ziv. "Don't agree" and "Anal with Ziv" unlocks anal scenes with Ziv where you are topping her.

TAND

There are two ways to get to Nkoy Rhedia, the aggressive route will allow you to make shortcuts, but it has a negative effect on your relationship with Ziv and possibly other members of your crew.

EPISODE 15

RHEDIA

You can either ignore Rhedia or listen to her explanation. If you listen to her story, you have the option to help her, or still side with Arlya and complete the mission. Siding with Arlya might have consequences later on and negatively impact your relationship with Ziv and possibly others of the crew.

SIMULATION

Depending on whether you've altered Lilly's profile in episode 8 the simulation plays out differently. In both cases you will be able to either fix the simulation, or leave things as is. The latter option will automatically destroy the simulation, the other will leave the simulation running indefinitely and trigger one of four endings:

- Good ending: If you didn't alter Lilly's profile or if you didn't profess your

love for Eva, you get a bittersweet ending with Lilly and Eva just living happily together on Tuolovi.

- Good ending: If you kissed Eva, told Lilly the truth about you coming to the simulation and didn't expect her sexual advances, they will both mourn your loss, but be in a romantic relationship together.

- Bad ending: If you lied to Lilly and accepted her sexual advances in the simulation, Eva will have died and Lilly is still crazy.

- Bad ending: If you professed your love for her, but didn't kiss Eva, Lilly will mourn both her and you together.

EVA

If you didn't wipe the simulation in Episode 8, you'll meet Eva in the med-bay. To have a chance at a relationship with her, you should be truthful and declare your love for her. This will allow you to romance her in the next episode.

If you went into the simulation on Douvis in Episode 13 and kissed Eva, you'll have the opportunity to start a relationship with her now, but only if you're not involved with anyone else currently, or if you stay silent on the matter. Staying silent isn't the best option, because it will make things harder to keep your relationship with her, or force you to break up with all the other women. Confessing about any other relationships will not immediately let you romance Eva, as this will happen in the next episode.

JADE

Jade will not like it if you approached Tand aggressively, defending yourself or making a promise to do better will keep you on the romance path. Putting in her place effectively ends the relationship.

LILLY

If you broke up with Lilly you can pick a fight with her, further souring your relationship.

THYIA

Letting Thyia take the blame for letting Eva enter the simulation might have a negative influence if you're in a romantic relationship with her.

EPISODE 16

SCOLGUIN PRISONER

You can either have sex with the Scolguin Prisoner (Xatrape) yourself or let Kit do it. Either way, you'll receive the same information.

SCOLGUIN QUEEN

Letting Nadya seal the deal with the queen and become the next Scolguin sacrifice doesn't have negative consequences. You will be able to find a way out of the deal later on in a later episode.

THYIA

During the restaurant visit with Thyia, she'll bring up the topic of children. If you want to follow the pregnancy path with Thyia you should tell her you want kids. Telling her you don't want any doesn't have a negative impact on your relationship.

EPISODE 17

DOCKS ENCOUNTER

Fighting or demanding an apology from the insulting man will impress Lilly and Vess (or just Lilly) and is the preferred choice.

TAAGMAR DIGNITARY

Being direct with the dignitary won't get you the answers, but you'll be able to obtain them from the guard, for a fee directly after the conversation.

GLIXKEN MERCENARY

Shooting or a non-lethal approach doesn't have any direct consequences, but these choices will matter later on in the story.

EVA

Eva will bring up a possible pregnancy. Being negative about it will not ruin your chances of a relationship with her, but you won't be able to get her pregnant later on.

LILLY

Telling Lilly you don't want kids will not have a negative effect on your relationship, but closes off the pregnancy path with her.

CÉLINE

If you've let Céline train her ass with a toy in Episode 10, you'll be able to have anal sex with her from now on.

RAENE

The pre-sex conversation with Raene will allow you to indicate whether Raene will be able to give you anal in future sex scenes, or if she'll be the only one on the receiving end.

EPISODE 18

GLIXKEN

It's better to let Thyia kill Glixken. She could bring it up in argument and this choice will be evaluated when determining if she wants to break up with you.

EVA

If you have a relationship with more women, you can bring up the possibility of a harem with Eva. If you want to continue seeing her individually, you should choose "Separate relationships".

Giving Eva a creampie during sex will heighten the chances of a pregnancy.

LILLY & CÉLINE

You can choose to fuck only one girl and then cum. This will not be appreciated by the girl who wasn't fucked and might lead to weakening your position if you ever have an argument with her.

The choice to creampie either Lilly or Céline will not be viewed negatively by them, but it strengthens the chance of one of them getting pregnant.

ZIV

Lying to Ziv will have a negative effect on your relationship and might end it at a later stage, so choose "Admit". If you want the chance to start a harem including Ziv, choose "Truth". Otherwise you can only continue an individual relationship with Ziv, or lose her entirely.

THYIA

You can watch Thyia masturbate by choosing "Keep watching". If you push your luck by selecting "Keep looking" she will catch you and get very angry. "Interrupt her" will also anger her. If you're not romancing her and made her angry, Thyia will refuse to talk to you in the second conversation. Otherwise she'll only be annoyed, but let your behavior slide.

EPISODE 19

ZIV

If you had a conversation with Ziv in the previous episode about your other relationships and told her the truth, she'll speak to you again. Depending on how you've acted towards her and Raene in previous episodes, she'll either forgive you or end the relationship. If she ends things and you apologize you'll at least keep her as a friend.

THIM

If Thim is not a friend or isn't the ship's doctor, he'll approach you and ask for his freedom. Not letting him go will anger him and make him an outright enemy.

CÉLINE

If you're in a relationship with Céline she'll broach the subject of having children. As with the other love interests, telling her you want children will activate her pregnancy path.

JADE

Jade will offer a way to have children with her. If you broach the subject of pregnancy you'll be able to outright consent to the treatment, or don't consent at first but accept the treatment after hearing her out. Both options will activate Jade's pregnancy path.

If you're in a relationship with any other girl, Jade will learn about your other relationships. Lying about the fact that you kissed someone doesn't convince Jade. If you have broached the subject of a harem with either Ziv, Eva or Lilly, you'll be able to propose the same to Jade and add her to the harem. Keeping the relationships separate is also possible and won't have a negative impact on your romances.

CHARACTERS

An overview of the most important characters featured in the game.



CAMRAN

OCCUPATION: CAPTAIN
AGE: 19
MEASUREMENTS: 6.12ft

SPECIES: HUMAN
PLANET: TUOLOVI

A minor noble from Tuolovi, who doesn't like to play by the rules.



LILLY

OCCUPATION: CREW MEMBER
AGE: 18
MEASUREMENTS: 39/30/31,
5.97ft

SPECIES: HUMAN
PLANET: TUOLOVI

Your redheaded younger sister and you don't always get along, but she manages to surprise you every now and then.



EVA

OCCUPATION: STUDENT
AGE: 18
MEASUREMENTS: 37/27/30,
5.97ft

SPECIES: HUMAN
PLANET: TUOLOVI

In many ways the opposite to Lilly, a sweet and soft-spoken girl and just as intelligent as her twin sister.



AVEN

OCCUPATION: SPECIALIST
AGE: 19
MEASUREMENTS: 40/29/32,
5.89ft

SPECIES: HUMAN
PLANET: TUOLOVI

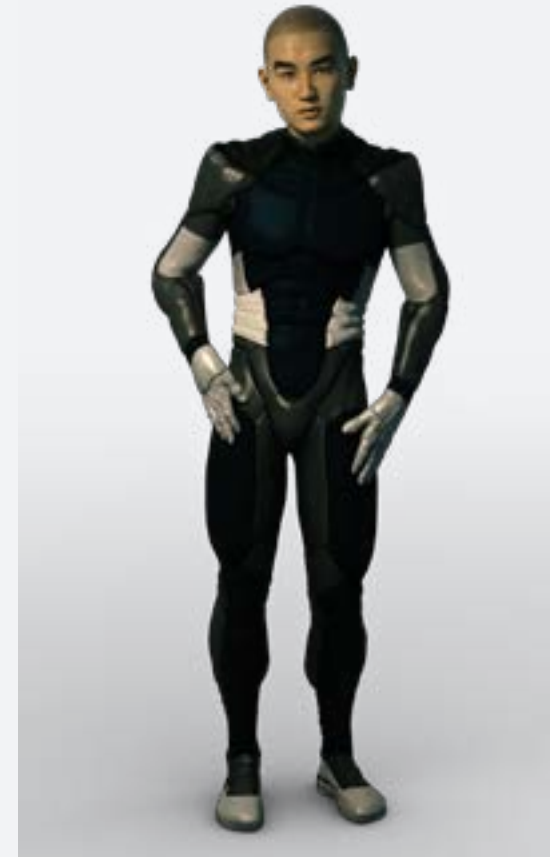
Before your cousin was taken away suddenly, Aven was your childhood playmate and a friend you shared everything with.



NADYA

OCCUPATION: **XENOBIOLOGIST** SPECIES: **HUMAN**
AGE: **49** PLANET: **TUOLOVI**
MEASUREMENTS: **41/27/32,**
5.72ft

Aunt Nadya, a xenobiology professor, was a continued presence in your youth, until she suddenly left your childhood home, taking Aven with her.



KIT

OCCUPATION: **SPECIALIST** SPECIES: **HUMAN**
AGE: **18** PLANET: **PROXIMA CENTAURI**
MEASUREMENTS: **5.97ft** **ORBITAL IV**

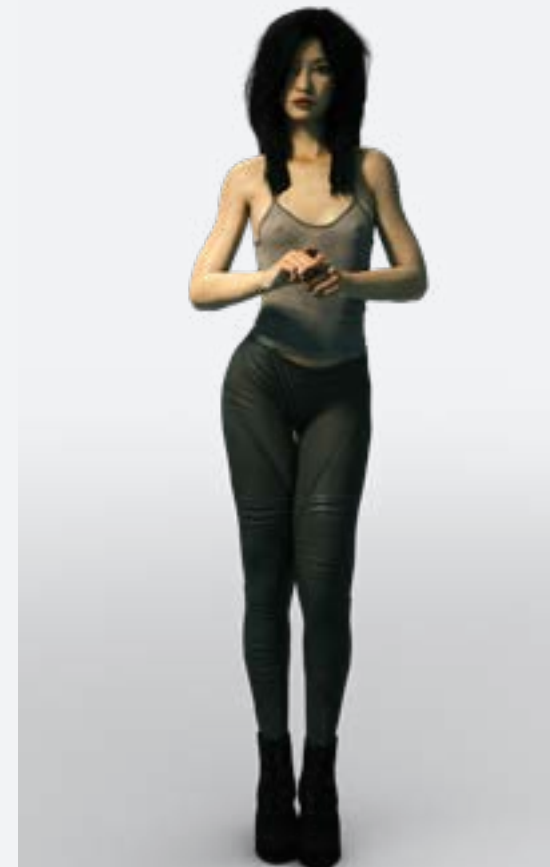
Your best friend at the Terran Naval Academy. Apart from being a daredevil, Kit likes women just as much as you do.



JADE

OCCUPATION: **ATTENDANT** SPECIES: **TWI'LL**
AGE: **19** PLANET: **LUCLITE**
MEASUREMENTS: **37/26/28,**
5.87ft

Formerly a Twi'll princess, Jade is now your personal attendant and takes care of your every (yes, every) need.



CÉLINE

OCCUPATION: **PILOT** SPECIES: **HUMAN**
AGE: **18** PLANET: **PROXIMA CENTAURI**
MEASUREMENTS: **34/25/28,** **ORBITAL IV**
5.89ft

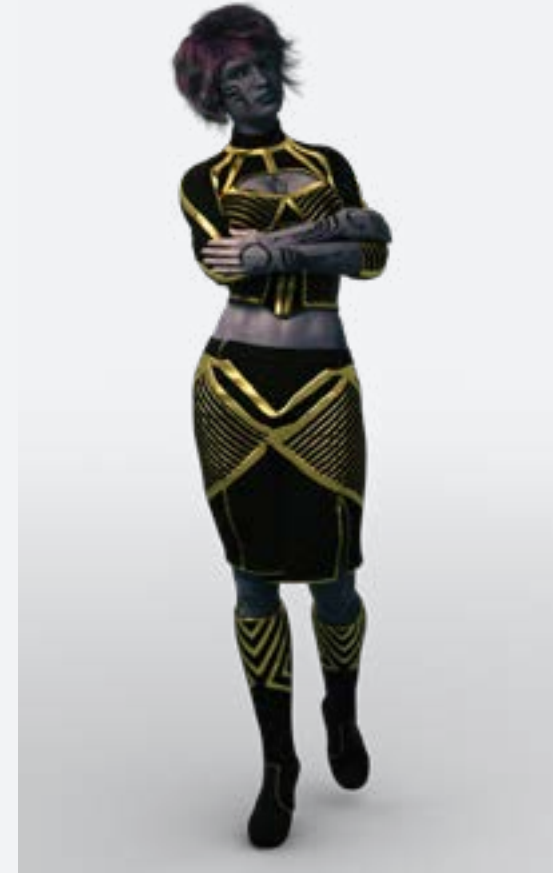
Rookie pilot and sister of Kit and friends with both of your sisters. She has a crush on you too...



VESS

OCCUPATION: CREW MEMBER **SPECIES:** HUMAN
AGE: 18 **PLANET:** UNKNOWN
MEASUREMENTS: 41/30/31,
5.62ft

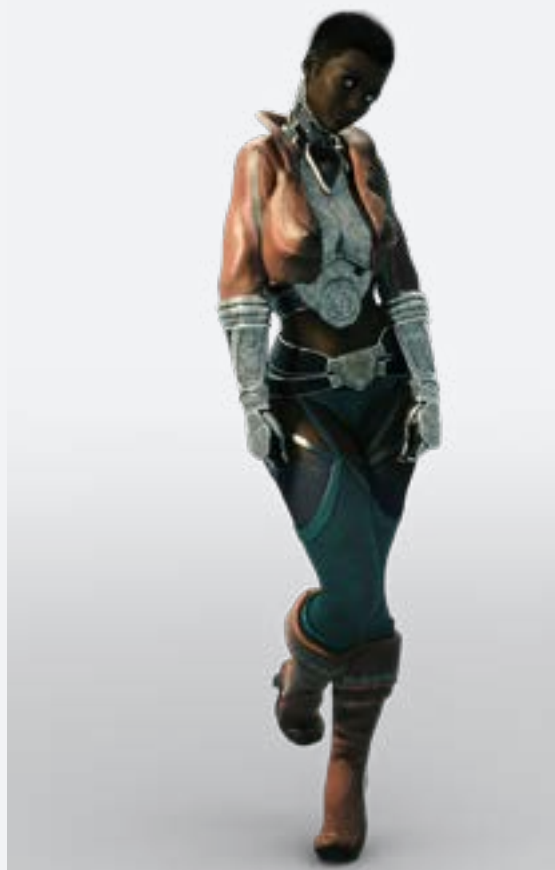
A damsel in distress who lost her family during a raid on Lanan.



ZIV

OCCUPATION: CREW MEMBER **SPECIES:** RHENKOY
AGE: 35 **PLANET:** GAMMA COHORT
MEASUREMENTS: 38/26/38,
5.89ft

A Rhenkoy who joins the crew with her ward Raene.



THYIA

OCCUPATION: ENGINEER **SPECIES:** HUMAN
AGE: 24 **PLANET:** MAELLA STATION
MEASUREMENTS: 38/25/44,
5.89ft

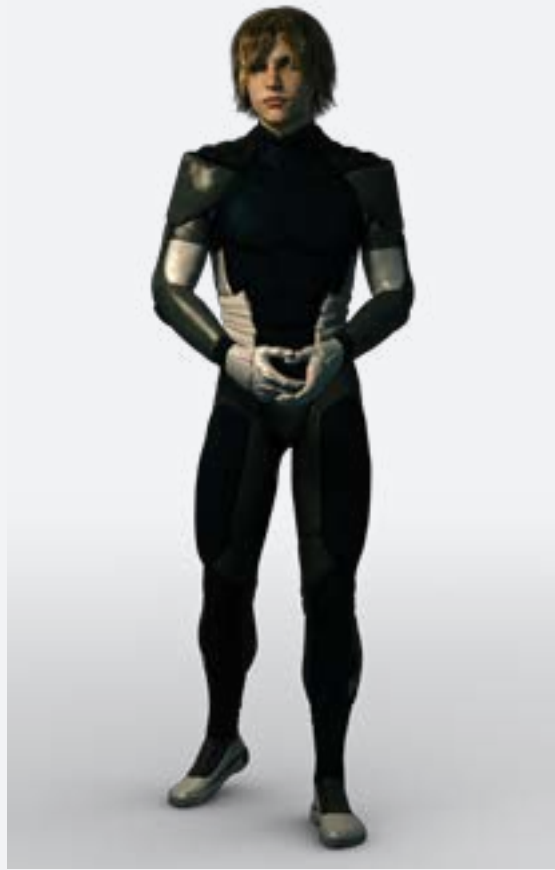
A skilled mechanic with a fiercely independent streak.



RAENE

OCCUPATION: CREW MEMBER **SPECIES:** HUMAN
AGE: 18 **PLANET:** VERDIGRIS V
MEASUREMENTS: 26/22/26,
5.89ft

Shy and very introverted, Raene joins the ship's crew with her friend Ziv.



THIM

OCCUPATION: **CREW MEMBER** SPECIES: **HUMAN**
AGE: **18** PLANET: **SKJALNIR XV**
MEASUREMENTS: **5.82ft**

Thim with a fucking 'H' can trace his noble lineage back to Old Earth in Medieval times. Also a douchebag.



AGUST

OCCUPATION: **BUSINESSMAN** SPECIES: **HUMAN**
AGE: **52** PLANET: **TUOLOVI**

Your father, a cunning businessman involved many shady dealings.



CALISTA

OCCUPATION: **COMMANDER** SPECIES: **HUMAN**
AGE: **48** PLANET: **PROXIMA CENTAURI**
MEASUREMENTS: **40/30/33,** **ORBITAL IV**
5.75ft

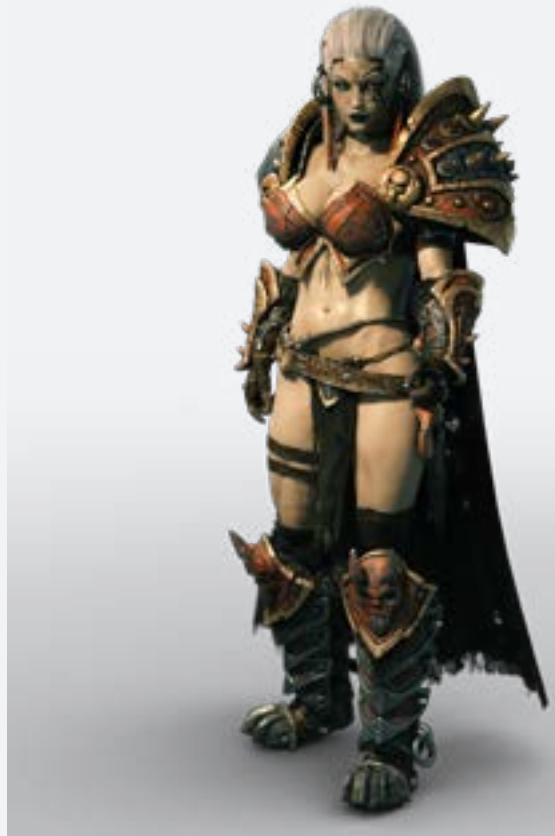
Mother of Kit and Céline and commander in the Terran Galactic Navy. She doesn't have a high opinion of Camran.



YVE

OCCUPATION: **POP IDOL** SPECIES: **HUMAN**
AGE: **40** PLANET: **TUOLOVI**
MEASUREMENTS: **39/29/32,**
5.86ft

Your mother, a former pop-idol stuck in a loveless marriage.



RAHIA

OCCUPATION: COMMANDER
AGE: UNKNOWN
MEASUREMENTS: 45/28/32,
5.93ft

SPECIES: ACARHYN
PLANET: ERIGONE

The commander of the warrior caste of the Acarhyn. She led the attack on Lanan P-10 during which Eva was kidnapped.

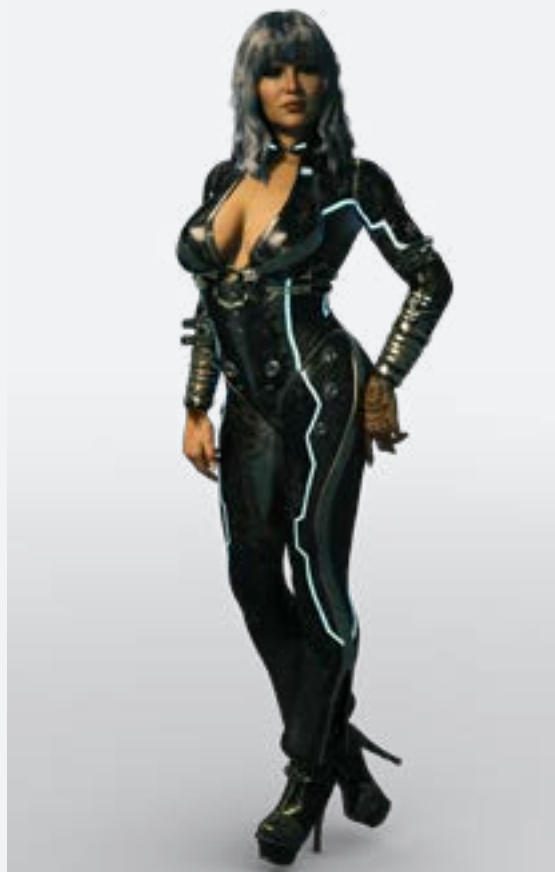


D'EE

OCCUPATION: CREW MEMBER
AGE: 28
MEASUREMENTS: 41/27/42,
5.79ft

SPECIES: R'O
PLANET: NYIRUAN 12-BETA

One of the females encountered in the Pits of Despair on one of the first missions the crew of the Iron Bastard undertakes.



KVI

OCCUPATION: BLOODHOUND
AGE: 39
MEASUREMENTS: 40/29/38,
5.63ft

SPECIES: HUMAN
PLANET: UNKNOWN

A Bloodhound in the employ of the Sovereignty. She is looking for the crew of the Iron Bastard.



HANNAH

OCCUPATION: INTERPRETER
AGE: 25
MEASUREMENTS: 36/23/37,
5.88ft

SPECIES: HUMAN
PLANET: UNKNOWN

A red-haired translator travelling with a species called the Tubloshi.

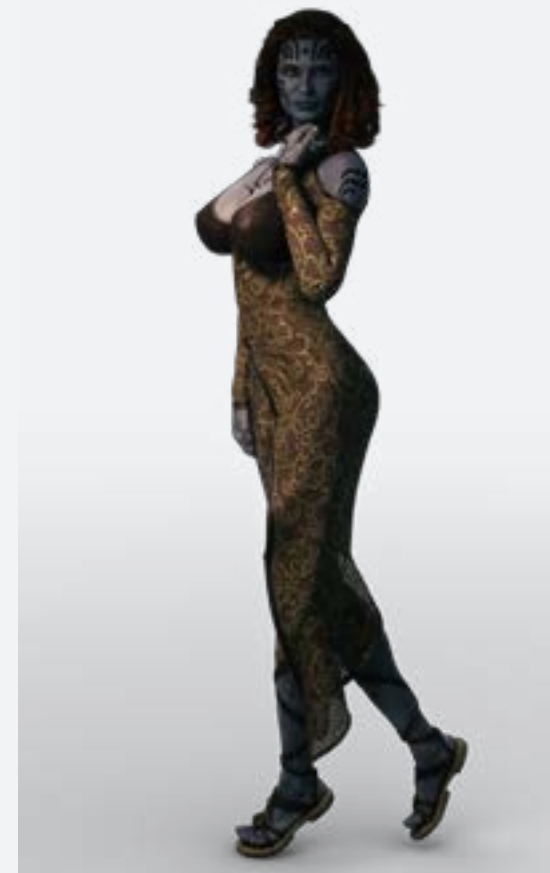


GLIXKEN

OCCUPATION: **MERCENARY**
AGE: **UNKNOWN**

SPECIES: **UNKNOWN**
PLANET: **UNKNOWN**

A ruthless mercenary who has unfinished business with Thyia.



LUZANE

OCCUPATION: **PREMIER**
AGE: **41**
MEASUREMENTS: **41/26/33,**
5.90ft

SPECIES: **RHENKOY**
PLANET: **UNKNOWN**

A disgraced Rhenkoy who's obsessed with her deceased Tubloshi lover.



KARAN HREIR

OCCUPATION: **SCIENTIST**
AGE: **58**

SPECIES: **HUMAN**
PLANET: **ASTEROID STATION**

A paranoid scientist living on a station inside an asteroid belt. Knows more about the warrior women encountered on Lanan.



THE CONFESSOR

OCCUPATION: **UNKNOWN**
AGE: **UNKNOWN**

SPECIES: **HUMAN**
PLANET: **UNKNOWN**

Leader of an unknown faction and pursuing his own agenda

IANA AND SILL

Two Twi'll who work as muscle for crime boss Doarn on Barranthis.

DAORN

Owner of the Double D Casino in Barranthular and criminal kingpin. Is looking to expand his business aggressively and doesn't hesitate to kill his rivals.

VITRIV

A forger who helps the crew get the necessary paperwork to attend one of the parties of Ranimo Cetrivar.

TAERA

A girl encountered in Garomph's factory on Barranthis. She's one of the human women held there to be milked.

DR. MOORA

A doctor working on the mysterious Höfel MDCL science facility where the crew was held after flying into an asteroid field as part of their escape from Barranthis

RANIMO CETRIVAR

Cetrivar was a high-ranking official who became Minister of Information and served as such for many years. Sovereignty politics is a dangerous game and Cetrivar even escaped a couple of attempts on his life.

Apparently he ultimately decided he had enough and fled the Sovereignty over-night, taking many state secrets with him. Years later, the man later

resurfaced, now living like a flamboyant king and information broker on a small moon far outside Sovereignty space.

ERYLIN

Leader of the priest caste of the Acarhyn. Has become a powerful political player at the Acarhyn court after the prophecy about the Virgin Queen leading the Acarhyn to Lanan P-10 seemingly turned out to be true.

Apart from being the religious leader of the Acarhyn, Erylin is also a geneticist. Many of the religious caste have both a spiritual and scientific calling.

ATHRYN

An Acarhyn warrior who was present at the attack on Lanan P-10. She stabbed Kit while he was trying to run after Eva as she was being dragged away.

The warrior was later encountered in the Acarhyn Citadel as one of the commander's lovers.

Athryn also partook in the Hunt and had an unfortunate encounter with a plant-based lifeform.

FRISA

An Acarhyn servant and one of the commander's lovers.

CAESE

A young Acarhyn scientist, infatuated with Nadya, who accompanies both Camran and Nadya on a jungle expedition to find a rare species of bird.

NISE

One of the Acarhyn priestesses and personal guards of Erylin.

ARIAH

One of the Acarhyn priestesses and personal guards of Erylin.

KEODELE

An acolyte of the Acarhyn priest caste. Her virginity is offered by Erylin in exchange for an alliance with the priest caste.

MADRIS

A courtesan in the Theater of Senses.

TINESIA

A courtesan in the Theater of Senses.

SIORA

A courtesan in the Theater of Senses.

ARLYA

One of the members (Nkoy) of the Council of Nkoy on Uailea, the Rhenkoy homeworld.

While the Council has refused helping the crew, Arlya has come forward on her own with a proposition.

RHEDIA

Once a respected member of the Council of Nkoy, Rhedia is now a renegade after openly inciting sedition. The former Nkoy has fled to a large forest near the village of Tand, together with her followers.

XATRAPE

A Scolguin prisoner in the Rhenkoy facility on Uailea. In exchange for sex, she revealed the location of the Supplicant's Stone where the Scolguin Fleet normally resides.

PLACES, TECHNOLOGY & ORGANIZATIONS

An overview of the most important places visited in the game, as well as the technology and organizations encountered or mentioned.

TUOLOVI

TYPE: **PLANET**

LOCATION: **ORBITTING TYPHON, HYDRUS CONSTELLATION**

A small green planet orbiting Typhon - once poetically called HD 10180 b. Birthplace of Camran. His mother Yve still lives in the family mansion on the surface of Tuolovi.

VLCO.

TYPE: **ORGANIZATION**

LOCATION: **TOOLES FOLLY (HD 154857 C), ARA CONSTELLATION**

An intergalactic trading and manufacturing company founded by the Valenmann family and operated by them for centuries. The company has a murky past and regularly engages in questionable activity, though most of it is sanctioned by the Terran government. Activities range from trading rare minerals, ship parts to slaves and grey-market biotics.

TERRAN GALACTIC NAVY

TYPE: **ORGANIZATION**

LOCATION: **MARS, PHOBOS STATION (HQ), PROXIMA CENTAURI ORBITAL IV (ACADEMY)**

The Terran Galactic Navy (TGN) is the name for the intergalactic fleet that keeps the peace in the human territories, collectively called the Sovereignty. Special divisions of the TGN are also occupied with conquering of new worlds, though the expansion of the Sovereignty has stagnated in recent years.

TERRAN GALACTIC SOVEREIGNTY

TYPE: **GOVERNMENT**

LOCATION: **LUNA (COUNCIL)**

The Terran Galactic Sovereignty, or just The Sovereignty, is the common name for the human empire spanning multiple star systems. It's ruled by

a board of administrators, consisting of wealthy industrials and old nobility. Government is heavily influenced by corporate policy and the economic interests of the nobles. The Sovereignty is in a permanent state of war with neighboring star systems, not under terran control and seeks every opportunity to extend its sphere of influence.

The government has several departments, of which the Department of Interplanetary Exploration is best known. Other big departments are the Department of Justice (employing the Bloodhounds), Defense (governing the Terran Galactic Navy), Information and Interstellar Trade and Foreign Relations.

The Sovereignty was founded after the United Nations collapsed and several large companies sought to protect their business interests and the nascent space exploration market. Ownership of Luna was heavily contested, until it became the seat of the new government.

THE SYLAS-KARZEN DRIVE

TYPE: **TECHNOLOGY**

Enables Faster Than Light Travel, allowing mankind to explore and conquer the stars. The development of the Sylas-Karzen Drive by Professor Hermann Sylas and Dr. Josephine Karzen is the result of several centuries of research, primarily based on the theories of Burkhard Heim and Miguel Alcubierre.

'Bursting' a drive allows for hyperspace travel, but without a clear destination and is deemed extremely dangerous.

VULPES VELOX

TYPE: **PLANET**

LOCATION: **SOMEWHERE NEAR ALPHA VULPECULAE**

The first planet visited by Camran and friends after their escape from the

TGN Ypotryll.

Most of the world is covered by desert, though there are several larger settlements. Thyia's workshop is located in one of the smaller towns on Vulpes Velox.

TGN YPOTRYLL

TYPE: **SHIP**

FACTION: **TERRAN GALACTIC NAVY**

The battle cruiser Ypotryll is one of the larger class of ships under the TGN banner and most often utilized in any type of situation, from troop deployment to large scale ship-to-ship battles.

The cruiser is commanded by Calista Szuzume and one of the Navy's flagships. Carried the recruits to their first training mission on Lanan and pursued Camran and crew after their desertion.

TGN ENFIELD

TYPE: **SHIP**

FACTION: **TERRAN GALACTIC NAVY (FORMERLY)**

A light fighter used by Camran and crew to desert from the Terran Galactic Navy and go after Eva. The ship is later sold as scrap to Thyia.

IRON BASTARD

TYPE: **SHIP**

FACTION: **CAMRAN'S CREW**

An aging cargo hauler outfitted with extra armored plating and guns by a string of owners. Part of the name stems from the alloy used in the armored plating, containing metals from Earth.

The Iron Bastard is offered as a replacement for the TGN Enfield by Thyia after Camran and friends have escaped from the TGN Ypotryll.

NYIRUAN 12-BETA

TYPE: **PLANET**

LOCATION: **AURIGA CONSTELLATION**

Homeworld of the R'o, a tribal species of humanoids. The planet has a moderate climate and is very green and fertile, allowing for the lifestyle the R'o tribes still practice - farming, hunting and gathering.

RYÜJIN PRIME

TYPE: **PLANET**

LOCATION: **CAT'S EYE NEBULA**

The majority of Ryūjin Prime is covered in a large metropolis, while the rest of the planet is virtually uninhabitable. The weather is artificially controlled and the climate is therefore very moderate, unless that control slips and the heavy rains start to fall.

The most important feature of Ryūjin Prime is the university, home to an incredible amount of aliens, all devoted to the pursuit of science.

Ryūjin Prime is also the home of Nadya and Aven after they were forced to leave Tuolovi.

VERDANT STATION

TYPE: **SPACE STATION**

LOCATION: **FLAMING STAR NEBULA**

A medium-sized commercial spaceport where the crew of the Iron Bastard touched down to repair the ship.

Several intergalactic companies have an office on the station, including ConVitæ.

VERDIGRIS V

TYPE: **PLANET**

LOCATION: **FLAMING STAR NEBULA**

A lush, green world. It was one of the planets colonised by humans during the Third Migration. It's inhabitants are the offspring of some religious groups and society therefore takes a dim view of anything it deems out of the ordinary.

HIS ETERNAL HOLY LIGHT THAT GRACES OUR PALTRY EXISTENCE A THOUSANDFOLD

TYPE: **SHIP**

FACTION: **UNKNOWN RELIGIOUS ORDER FROM VERDIGRIS V**

A large cruiser belonging to Hierophant Sacleus, of the religious order based on Verdigris V and Raen's father.

CONVITÆ

TYPE: **ORGANIZATION**

LOCATION: **VERDANT STATION (FRANCHISE OFFICE), HEADQUARTERS UNKNOWN**

A medical company specializing in simulation technology. They have an office on Verdant Station where Camran is able to enter one of their simulations for research purposes.

BARRANTHIS

TYPE: **PLANET**

LOCATION: **STRUVE'S POLE**

The planet's main feature is Barranthular, a seedy metropolis and home to

several of the galaxy's worst criminals.

HÖFEL MDCL

TYPE: **SPACE STATION**

LOCATION: **HELLUVIAN BELT**

A science facility operated by ConVitæ where the crew was held after flying into an asteroid field as part of their escape from Barranthis.

ALMAGEST

TYPE: **PLANET**

LOCATION: **PSI1 DRACONIS**

Almagest is covered in a vast ocean. The only landmass is an island owned by Ranimo Cetrivar. His villa, built into a cliff, has been the scene of many illustrious parties.

ERIGONE

TYPE: **PLANET**

LOCATION: **HYGINUS CHAIN**

Home planet of the Acarhyn, the warrior race that kidnapped Eva. Erigone is supposedly a microquasar and a very dangerous place indeed.

KEPLER XIV

TYPE: **PLANET**

LOCATION: **SOVEREIGNTY SPACE**

Kepler XIV is a planet at the edge of Sovereignty territory. Known for its beaches and various entertainments, it's a popular retreat for people from all over Sovereignty space.

Kepler is also a childhood memory, as the Valenmann de Lonval family spent their annual vacations on the planet.

THEATER OF SENSES (KEPLER)

TYPE: **MOON**

LOCATION: **ORBITING KEPLER XIV**

A high-end bordello situated on a moon orbiting Kepler XIV and operated by the Tyuarene.

TGN JACULUS

TYPE: **SHIP**

FACTION: **TERRAN GALACTIC NAVY**

The Jaculus is the largest class of ship in the Terran Galactic Navy and appears to be under command of your father Agust.

DOUVIS

TYPE: **PLANET**

LOCATION: **DOU SYSTEM**

A small ice-covered planet and almost uninhabited because of the very harsh climate. The only known living creatures reside in a trading hub at the foot of a mountain range.

UAILEA

TYPE: **PLANET**

LOCATION: **RHENKOY DOMAIN**

Rhenkoy homeworld and the seat of the Council of Nkoy. Many of the planet's cities are noted for their distinct architecture.

TAND

TYPE: **CITY**

LOCATION: **UAILEA**

A small and quiet town on Uailea, the Rhenkoy homeworld. Tand borders

on a largest forest where Nkoy Rhedia supposedly resides after fleeing the capital.

SUPPLICANT'S STONE

TYPE: **ASTEROID**

LOCATION: **SCOLGUIN TERRITORY**

An asteroid that serves as a Scolguin beacon for other species to leave sacrifices in exchange for information. It's also the location where the bulk of the Scolguin fleet normally resides.

ALTUM STATION

TYPE: **SPACE STATION**

LOCATION: **ADJACENT TO HAWWA CLUSTER**

A space station near the Hawwa cluster. The station has taken in a lot of refugees fleeing the conflict instigated by the Sovereignty against the Taagmar.

TAAGMAR

TYPE: **PLANET**

LOCATION: **HAWWA CLUSTER**

A planet in the Hawwa Cluster and home to the Taagmar. Currently under siege by the Sovereignty, who are looking for a gateway on the planet's surface.

GRAND ARCH OF TAAG

TYPE: **RELIGIOUS SITE**

LOCATION: **HAWWA CLUSTER**

A religious site in the capital on the home planet of the Taagmar in the Hawwa Cluster. Of interest to several parties pursuing the prophecy, in-

cluding the Confessor and the Sovereignty, the latter having laid siege to the planet.

AURIC EXEMPLAR

TYPE: **ORGANIZATION**

LOCATION: **SOVEREIGNTY SPACE**

A secretive organization of people disillusioned by the Sovereignty. The group of rebels has yet to take direct action against the Sovereignty, but that hasn't stopped the government branding them as terrorists. Membership of the Auric Exemplar is forbidden and subject to severe penalties.

After being stripped from her rank in the Navy, Calista Szuzume was approached by a woman who claimed to be a member of the Auric Exemplar.

PACLERARA

TYPE: **PLANET**

LOCATION: **SABINE COMBINE**

A planet full of teeming forests and expansive lakes. This paradisaical planet was the last resting place of Jade's mother after fleeing from the Twi'll homeworld Luclite.

SPECIES

*An listing of the alien species in
Tales From The Unending Void.*

HUMANS

HOMEWORLD: **THE SOVEREIGNTY**

Originally hailing from Earth, the human species has expanded explosively in the past few centuries. United under the banner of The Sovereignty, most humans live in Sovereignty space. Though humans are found scattered throughout the galaxy, they likely lead the lives of outcasts and wanderers.

TWILL

HOMEWORLD: **LUCLITE, XUT THANAILI**

Tw'ill were the first alien species the human race encountered on their initial explorations outside the known galaxy. The intelligent, benign race of humanoids were promptly enslaved by the Terran invaders and their home world Luclite orbiting Xut Thanaili was destroyed. 80% of the populace were wiped out and the rest of them (male and female) are commonly held as sex slaves by wealthy Terran individuals.

R'O

HOMEWORLD: **NYIRUAN 12-BETA**

The R'o are a tribal race without much interest in outer space. A few of them can be encountered on space stations, as can be expected. Most of the R'o live and die on their home planet, Nyiruan 12-Beta, after a hard life of farming or hunting and gathering."), Camran and crew encounter a tribe of R'o during their cargo delivery run on Nyiruan.

BOVERINE

HOMEWORLD: **SAGUELIATH**

Boverine are native to the planet Sagueliath and extremely dangerous predators. The crew was tasked with retrieving an larvae of a boverin for Karan Hreir.

RHENKOY

HOMEWORLD: **UNKNOWN**

Rhenkoy are a hermaphroditic, commonly purple-skinned species. They often act as diplomats to broker peace-agreements between races. The Rhenkoy have a strict caste system in which the population is divided into Cohorts and lead by a hierarchy headed by a Premier. The entire Rhenkoy population of Cohorts is ruled by the Council of Nkoy.

TUBLOSHI

HOMEWORLD: **UNKNOWN**

A warrior race known for taking pride in their honor and hero worship. The Tubloshi mounted several military campaigns of which the Fifth Glorious Campaign was the last. predators. The crew was tasked with retrieving an larvae of a boverin for Karan Hreir.

ACARHYN

HOMEWORLD: **ERIGONE**

An elusive race of human-like warrior women living in a system called Erigone, that's supposedly an irradiated nebula containing a black hole and a dying star. The Acarhyn are responsible for the assault on Lanan P-10 and the kidnapping of Eva.

YALVAI

HOMEWORLD: **UNKNOWN**

A parasitic species that grants its host, male or female, special sexual powers in return for laying and fertilizing eggs inside a host. The Yalvai parasites favor human hosts and are often used in spectacular sexual rituals.

EETU

HOMEWORLD: **UNKNOWN**

A species of bird living in the jungle on Erigone.

CALGOUND

HOMEWORLD: **ERIGONE**

Calgounds are a species native to Erigone and used primarily by the Acarhyn populace for hunting in the jungle. The calgound is also the required mount to partake in the so-called ceremonial Hunts.

The animals are best described as looking like a cross between a lion and a wolf. They're wild animals, but with the proper training they can be ridden like horses.

UNDREA

HOMEWORLD: **ERIGONE**

A large insect-like monstrosity found in the jungles of Erigone. An Undrea was Prey in the Hunt of the Acarhyn and killed by Camran.

TYUARENE

HOMEWORLD: **UNKNOWN**

The Tyuarene have devoted themselves to researching sexual pleasure among all of the known species in existence. They also operate a number of brothels, or so-called 'Theaters of Senses', all around the galaxy.

SCOLGUIN

HOMEWORLD: **UNKNOWN**

Mysterious aliens who generally demand a sacrifice before dealing with other species.

VRARR

HOMEWORLD: **UNKNOWN**

An alien species with a martial culture. Involved in a skirmish with the Scolguin a few years ago.

TAAGMAR

HOMEWORLD: **TAAGMAR, HAWWA CLUSTER**

A species occupying an eponymous planet in the Hawwa Cluster, a secret staging ground for Sovereignty forces led by Agust.

C'TAET

HOMEWORLD: **C'TAET PASSEL**

Due to their frightening appearance, the C'Taet often shun humanoid society. The C'Taet float above the ground and communicate by speech and the shifting colors of their semi-translucent bodies.